

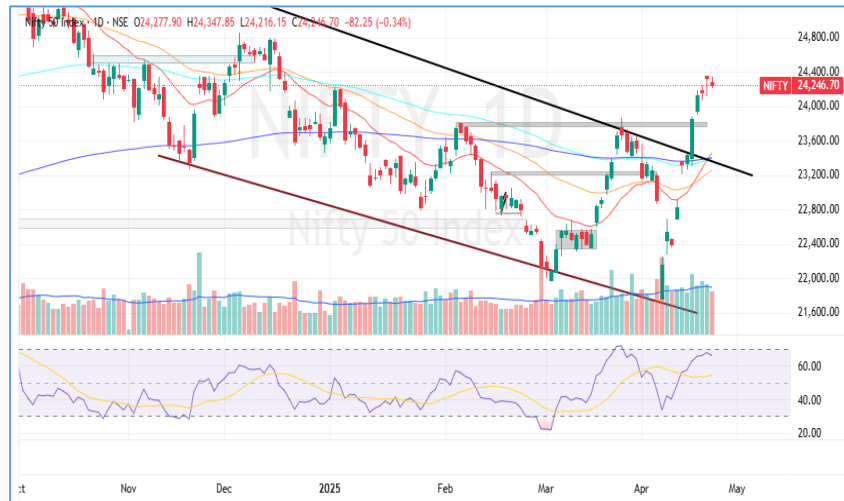
# Market Mood





25<sup>th</sup> April 2025

# Market Mood



<b>LTP</b>	24246.70
<b>R1</b>	24360
<b>R2</b>	24500
<b>S1</b>	24100
<b>S2</b>	24000

- The NIFTY index opened flat at 24,277.90 and moved sideways throughout the session, eventually closing at 24,246.70, down by 0.34%.
- On the daily chart, NIFTY formed an indecisive candle, reflecting a sideways trend in the near term. The RSI stands at 65.87, reinforcing this neutral outlook. and reflecting tug of war between bulls and bears. In line with our expectations index saw a muted day
- For today's session, traders should keep an eye on resistance levels at 24,360 and 24,500, with support seen at 24,100 and 24,000.



<b>LTP</b>	55201.40
<b>R1</b>	55500
<b>R2</b>	56000
<b>S1</b>	55000
<b>S2</b>	54800

- The BANKNIFTY index opened with a gap down of around 270 points at 55,103.90. It attempted to recover but faced resistance near the 55,550 level and traded sideways for the rest of the session. A decline in the final hour led to a close at 55,201.40, down 0.3%.
- On the daily chart, BANKNIFTY formed an indecisive candle. However, the index is managing to hold above the 55,000 level while taking support near the 20 EMA.
- For today's session, the outlook on BANKNIFTY remains positive as long as it sustains above the 55,000 mark. Traders can watch for resistance at 55,500 and 56,000, with support levels at 55,000 and 54,800.

## Global Market:

	<b>Dow Jones Futures</b> <small>CFD</small>	40,058.06	-35.34	-0.09
	25 Apr, 2025   07:52 IST			
	<b>S&amp;P 500</b> <small>CFD</small>	5,484.77	108.91	2.03
	25 Apr, 2025   01:29 IST			
	<b>Nasdaq</b> <small>CFD</small>	17,166.04	457.99	2.74
	25 Apr, 2025   01:29 IST			
	<b>FTSE</b>	8,407.44	4.26	0.05
	24 Apr, 2025   21:20 IST			
	<b>CAC</b>	7,502.78	20.42	0.27
	24 Apr, 2025   21:20 IST			
	<b>DAX</b>	22,064.51	102.54	0.46
	24 Apr, 2025   21:45 IST			

## Sentiment Gauge



Sideways to Positive

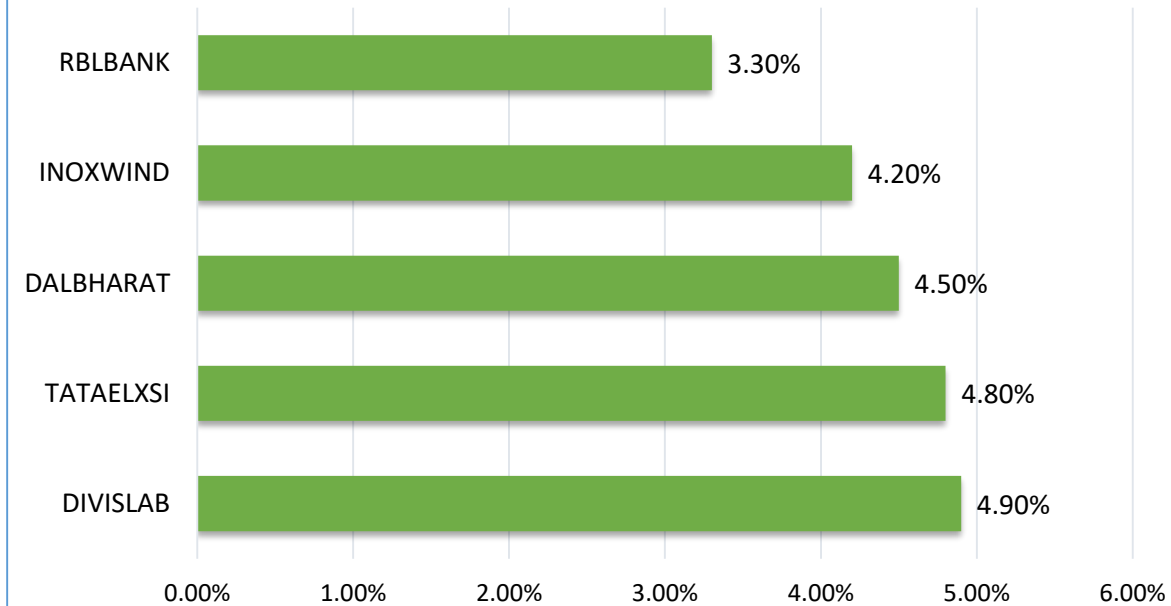
## FII - DII Activities:

Activity	FII (Cr)	DII (Cr)
Cash	8250.53	-534.54
Adv/Dec		
Advance	Decline	A/D Ratio
99	121	0.82

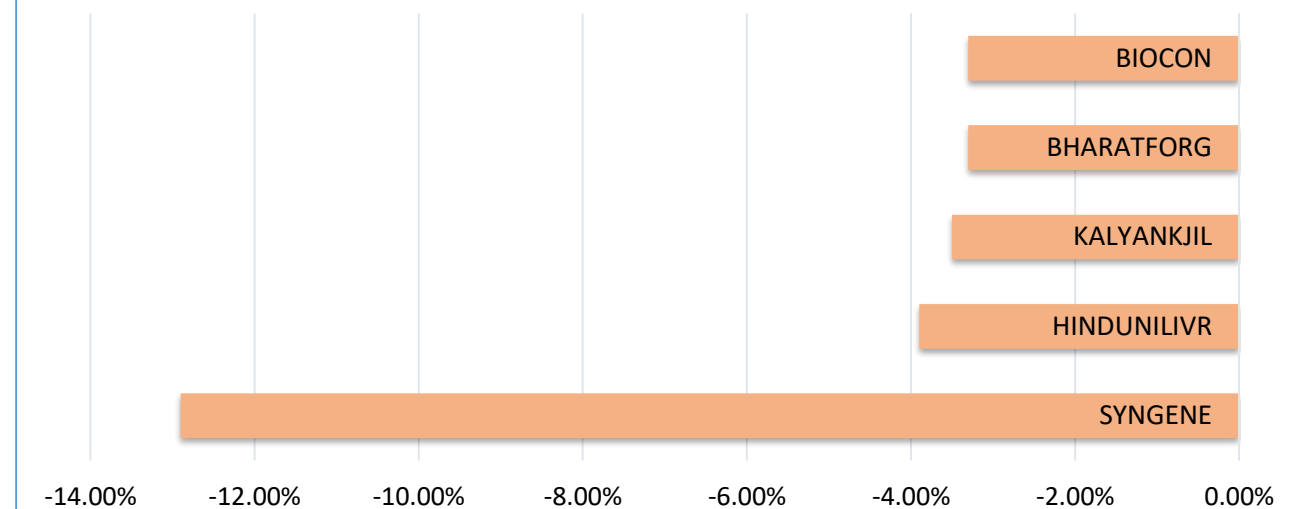
25<sup>th</sup> April 2025

# Market Mood

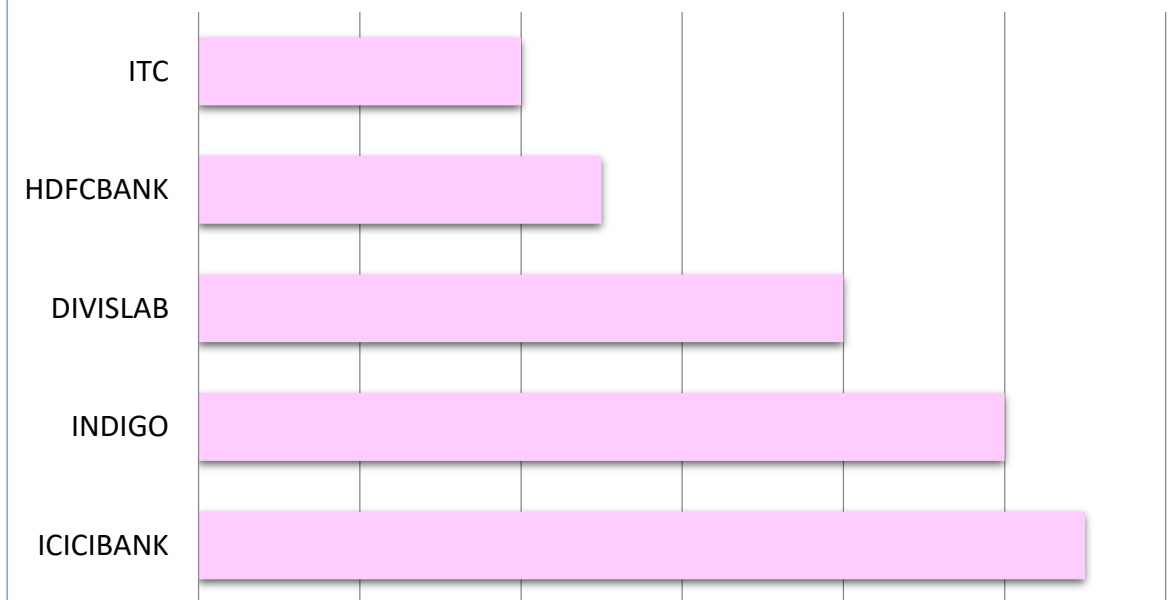
## PRICE UP



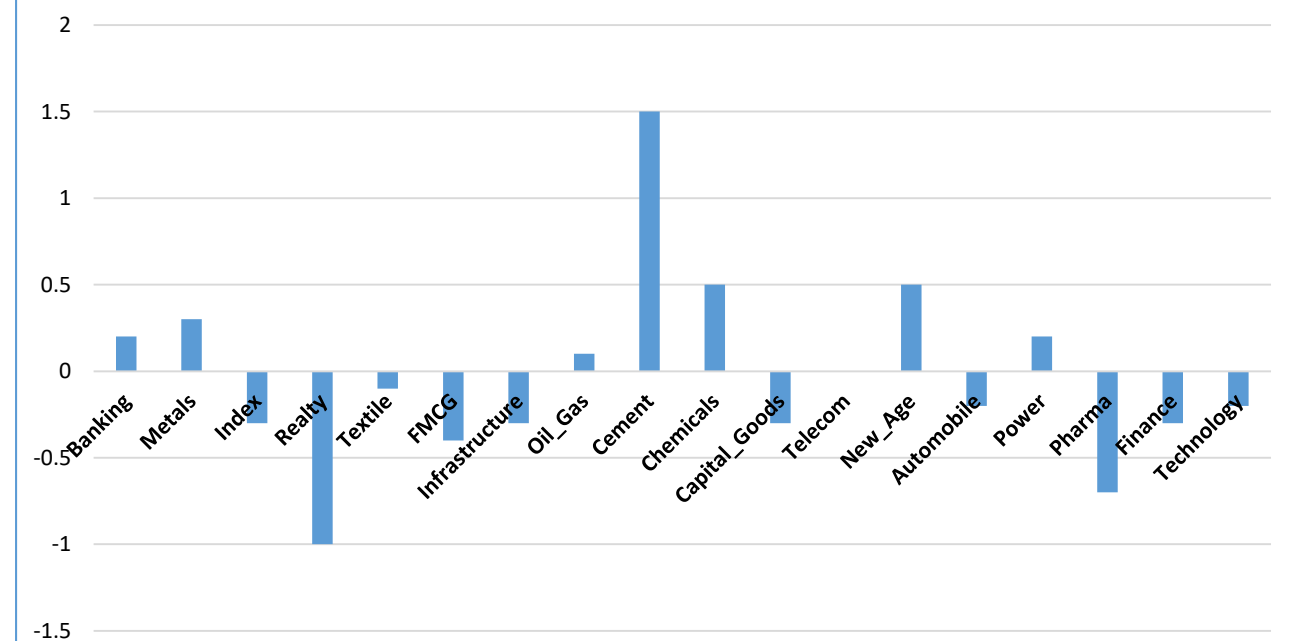
## PRICE DOWN



## DELIVERY HEAVY



## SECTOR



Results Calendar

Date	RESULTS	Expected	Previous
25th Apr 25	RELIANCE INDUSTRIES	-	-
25th Apr 25	MARUTI SUZUKI INDIA	-	-
25th Apr 25	SHRIRAM FINANCE	-	-
25th Apr 25	ORACLE OSWAL FINANCIAL SERVICES	-	-

25<sup>th</sup> April 2025

# Market Mood

## CALL OF THE DAY



KRSNA (Intraday pick)

Short Below :- 754 SL :- 762 Target:- 738/734

During the daily timeframe, the stock formed a strong bearish candle. Additionally, the price action indicates three black crows, reinforcing a bearish outlook. The trading volume over the last session has been remarkable, indicating selling interest at current levels. A sustained move below the 754 level could trigger further downside momentum, making this a critical level for traders anticipating a continuation of the bearish trend.

## DELIVERY CALL



AJANTA PHARMA (Delivery pick )

Buy above: 2792 ; SL: 2700 (Daily Closing Basis); Target: 2961

Ajanta Pharma has successfully broken above a falling trend line on the daily timeframe, confirmed by a strong bullish candle and above-average volume over the last 20 sessions—indicating renewed buying interest and bullish sentiment in the stock. The stock is trading above its 20, 50, 100, and 200-day EMAs, reinforcing a well-established bullish trend. Additionally, the Relative Strength Index (RSI) is at 63.23 and trending higher, suggesting positive momentum and strengthening the overall bullish outlook.

25<sup>th</sup> April 2025

# Market Mood



## Nifty 50 Snapshot

Script	LTP	CHNG	%CHNG	R1	R2	S1	S2
NIFTY 50	24,246.70	-82.25	-0.34	24,335	24423.63	24,158.24	24,069.77
INDUSINDBK	819.35	25.15	3.17	852	884.3834	786.83	754.32
ULTRACEMCO	12,175.00	226	1.89	12,399	12622.02	11,951.49	11,727.98
GRASIM	2,730.50	44.9	1.67	2,772	2813.513	2,688.99	2,647.49
DRREDDY	1,204.90	18.9	1.59	1,228	1250.914	1,181.89	1,158.89
CIPLA	1,554.00	20.3	1.32	1,574	1593.843	1,534.08	1,514.16
TATAMOTORS	667.9	8	1.21	676	684.3524	659.67	651.45
SUNPHARMA	1,806.90	18.1	1.01	1,828	1848.648	1,786.03	1,765.15
TATACONSUM	1,160.90	10.8	0.94	1,207	1252.222	1,115.24	1,069.58
TITAN	3,387.00	29.7	0.88	3,420	3453.082	3,353.96	3,320.92
HEROMOTOCO	3,962.90	22.4	0.57	4,004	4044.942	3,921.88	3,880.86
ASIANPAINT	2,466.40	13.3	0.54	2,502	2537.063	2,431.07	2,395.74
TECHM	1,446.60	7	0.49	1,469	1490.406	1,424.70	1,402.79
JSWSTEEL	1,044.00	4.8	0.46	1,055	1066.594	1,032.70	1,021.41
JIOFIN	258.94	0.8	0.31	261	262.9877	256.92	254.89
RELIANCE	1,303.50	3.5	0.27	1,313	1323.335	1,293.58	1,283.67
COALINDIA	399.8	0.85	0.21	403	405.2566	397.07	394.34
TATASTEEL	141.44	0.28	0.2	142	143.4955	140.41	139.38
AXISBANK	1,208.50	1.6	0.13	1,223	1238.083	1,193.71	1,178.92
BAJAJFINSV	2,103.30	2.5	0.12	2,136	2169.295	2,070.30	2,037.30
SBILIFE	1,615.00	-0.5	-0.03	1,636	1657.399	1,593.80	1,572.60
MARUTI	11,901.00	-6	-0.05	12,016	12131.8	11,785.60	11,670.20
LT	3,298.20	-2.8	-0.08	3,317	3336.648	3,278.98	3,259.75
NTPC	363.45	-0.35	-0.1	366	369.4061	360.47	357.49
HINDALCO	628.35	-0.75	-0.12	632	636.3357	624.36	620.36



25<sup>th</sup> April 2025

# Market Mood



Script	LTP	CHNG	%CHNG	R1	R2	S1	S2
INFY	1,473.00	-1.9	-0.13	1,486	1499.918	1,459.54	1,446.08
BEL	305.45	-0.4	-0.13	309	311.9267	302.21	298.97
TRENT	5,320.00	-9	-0.17	5,408	5496.998	5,231.50	5,143.00
APOLLOHOSP	7,130.00	-12	-0.17	7,186	7241.555	7,074.22	7,018.44
SBIN	812	-1.45	-0.18	817	822.2406	806.88	801.76
TCS	3,406.00	-7	-0.21	3,424	3441.775	3,388.11	3,370.22
ITC	429.85	-1	-0.23	434	438.5166	425.52	421.18
HCLTECH	1,590.30	-3.7	-0.23	1,607	1624.657	1,573.12	1,555.94
ADANIPTS	1,236.00	-3.1	-0.25	1,246	1256.247	1,225.88	1,215.75
NESTLEIND	2,427.00	-6.4	-0.26	2,511	2595.046	2,342.98	2,258.95
POWERGRID	314	-0.95	-0.3	316	317.8073	312.10	310.19
BAJFINANCE	9,290.00	-33	-0.35	9,589	9887.53	8,991.24	8,692.47
WIPRO	242.7	-0.9	-0.37	245	247.6437	240.23	237.76
KOTAKBANK	2,218.10	-8.9	-0.4	2,234	2250.235	2,202.03	2,185.97
HDFCBANK	1,914.90	-9	-0.47	1,929	1943.848	1,900.43	1,885.95
ADANIENT	2,441.00	-12.6	-0.51	2,465	2488.067	2,417.47	2,393.93
BAJAJ-AUTO	8,215.00	-46.5	-0.56	8,313	8410.896	8,117.05	8,019.10
HDFCLIFE	705	-4.1	-0.58	712	719.3256	697.84	690.67
M&M	2,898.00	-19.8	-0.68	2,941	2983.525	2,855.24	2,812.47
SHRIRAMFIN	698.9	-5	-0.71	706	714.0103	691.34	683.79
ONGC	249.69	-2.48	-0.98	252	255.1653	246.95	244.21
ETERNAL	236.8	-2.44	-1.02	241	245.0707	232.66	228.53
ICICIBANK	1,401.00	-23.4	-1.64	1,418	1435.241	1,383.88	1,366.76
EICHERMOT	5,632.00	-108	-1.88	5,733	5834.017	5,530.99	5,429.98
BHARTIARTL	1,846.10	-35.5	-1.89	1,875	1904.453	1,816.92	1,787.75
HINDUNILVR	2,324.00	-99.8	-4.12	2,430	2535.888	2,218.06	2,112.11
INFY	1,473.00	-1.9	-0.13	1,486	1499.918	1,459.54	1,446.08

**HARSHITA DARAK**  
**Technical Research Analyst**

Disclosure: M/s. Bonanza Portfolio Ltd here by declares that views expressed in this report accurately reflect view point with subject to companies/securities. M/s. Bonanza Portfolio Ltd has taken reasonable care to achieve and maintain independence and objectivity in making any recommendations. The Analysts engaged in preparation of this Report or his/her relative: - (a) do not have any financial interests in the subject company mentioned in this Report; (b) do not own 1% or more of the equity securities of the subject company mentioned in the report as of the last day of the month preceding the publication of the research report; (c) do not have any material conflict of interest at the time of publication of the Report. The Analysts engaged in preparation of this Report:- (a) have not received any compensation from the subject company in the past twelve months; (b) have not managed or co-managed public offering of securities for the subject company in the past twelve months; (c) have not received any compensation for investment banking or merchant banking or brokerage services from the subject company in the past twelve months; (d) have not received any compensation for products or services other than investment banking or merchant banking or brokerage services from the subject company in the past twelve months; (e) has not received any compensation or other benefits from the subject company or third party in connection with the Report; (f) has not served as an officer, director or employee of the subject company; (g) is not engaged in market making activity for the subject company.

M/s. Bonanza Portfolio Ltd is a registered Research Analyst under the regulation of SEBI, the year 2014. The Regn No. INH100001666 and research analyst engaged in preparing reports is qualified as per the regulation's provision.

Disclaimer: This research report has been published by M/s. Bonanza portfolio Ltd and is meant solely for use by the recipient and is not for circulation. This document is for information purposes only and information / opinions / views are not meant to serve as a professional investment guide for the readers. Reasonable care has been taken to ensure that information given at the time believed to be fair and correct and opinions based thereupon are reasonable, due to the nature of research it cannot be warranted or represented that it is accurate or complete and it should not be relied upon as such. If this report is inadvertently send or has reached to any individual, same may be ignored and brought to the attention of the sender. Preparation of this research report does not constitute a personal recommendation or take into account the particular investment objectives, financial situations, or needs of individual clients. Past performance is not a guide for future performance. This Report has been prepared on the basis of publicly available information, internally developed data and other sources believed by Bonanza portfolio Ltd to be reliable. This report should not be taken as the only base for any market transaction; however this data is representation of one of the support document among other market risk criterion. The market participant can have an idea of risk involved to use this information as the only source for any market related activity.



The distribution of this report in definite jurisdictions may be restricted by law, and persons in whose custody this report comes, should observe, any such restrictions. The revelation of interest statements integrated in this analysis are provided exclusively to improve & enhance the transparency and should not be treated as endorsement of the views expressed in the analysis. The price and value of the investments referred to in this report and the income from them may go down as well as up. Bonanza portfolio Ltd or its directors, employees, affiliates or representatives do not assume any responsibility for, or warrant the accuracy, completeness, adequacy and reliability of such information / opinions / views.

While due care has been taken to ensure that the disclosures and opinions given are fair and reasonable, none of the directors, employees, affiliates or representatives of M/s. Bonanza portfolio Ltd shall be liable. Research report may differ between M/s. Bonanza portfolio Ltd RAs and other companies on account of differences in, personal judgment and difference in time horizons for which recommendations are made. Research entity has not been engaged in market making activity for the subject company. Research analyst has not served as an officer, director or employee of the subject company. Research analyst has not received any compensation/benefits from the Subject Company or third party in connection with the research report.

Bonanza Portfolio Ltd. Bonanza House, Plot No. M-2, Cama Industrial Estate. Walbhat Road, Goregaon (E), Mumbai – 400063  
Web site: <https://www.bonanzaonline.com> SEBI Regn. No.: INZ000212137 BSE CM: INB 011110237 | BSE F&O: INF 011110237 |  
MSEI: INE 260637836 | CDSL: 120 33500 | NSDL: a) IN 301477 | b) IN 301688 (Delhi) PMS: INP 000000985 | AMFI: ARN -0186